

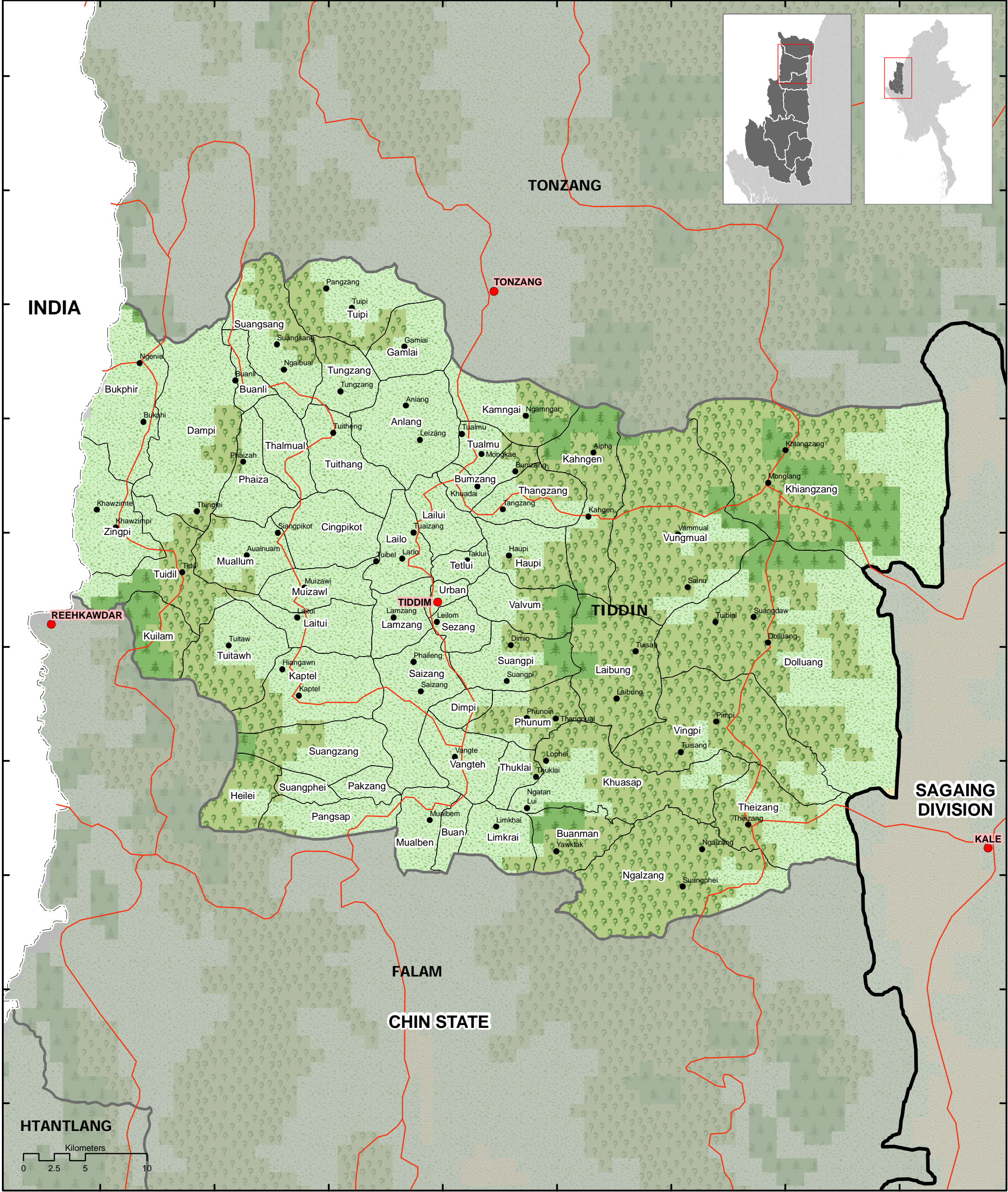
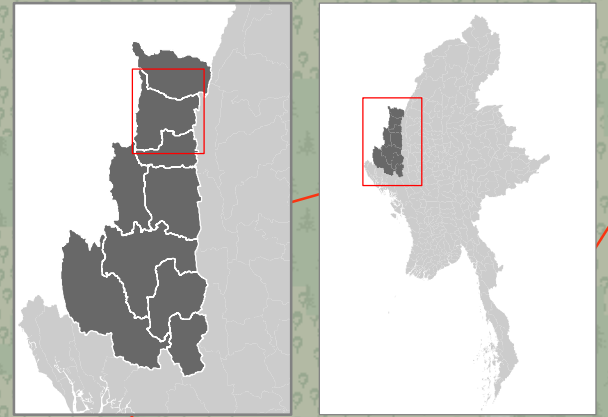
TIDDIM TOWNSHIP

Chin State



Myanmar Information Management Unit

93°25'E 93°30'E 93°35'E 93°40'E 93°45'E 93°50'E 93°55'E 94°0'E



INDIA

TONZANG

TONZANG

TIDDIM

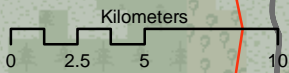
SAGAING DIVISION

KALE

FALAM

CHIN STATE

HTANTLANG



Map ID: MIMU249v1_Tiddim Township

Creation Date 06 August 2009, A3


Projection/Datum: Geographic/WGS84

Map produced by the MIMU - info.mimu@undp.org

● Villages	Land Cover	Deciduous Forest
● Towns	Agriculture	Dry Mixed Deciduous Forest
● Roads	Scrubland	Moist Mixed Deciduous Forest
--- Country Boundary	Forest	Mangrove
--- State_Division Boundary	Evergreen Forest	No data
--- Township Boundary		Urban
--- Village Tract Boundary		

Data Sources :

BASE MAP - (MIMU);
 Village Tract Boundary : SLRD
 Other Boundaries - WFP modified by MIMU 2008;
 Place names - Ministry of Home Affair (GAD)
 translated by MIMU



Disclaimer: The names shown and the boundaries used on this map do not imply official endorsement or acceptance by the United Nations.