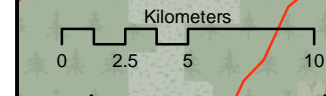
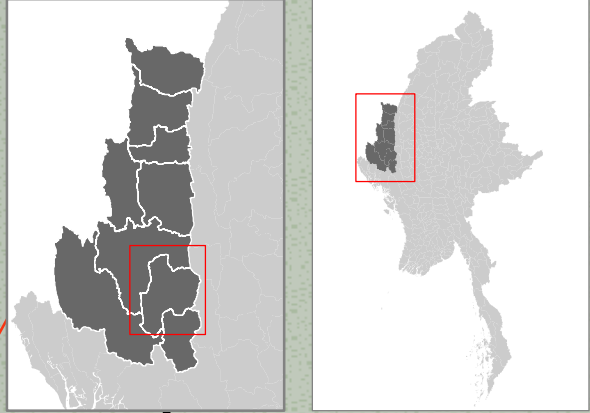
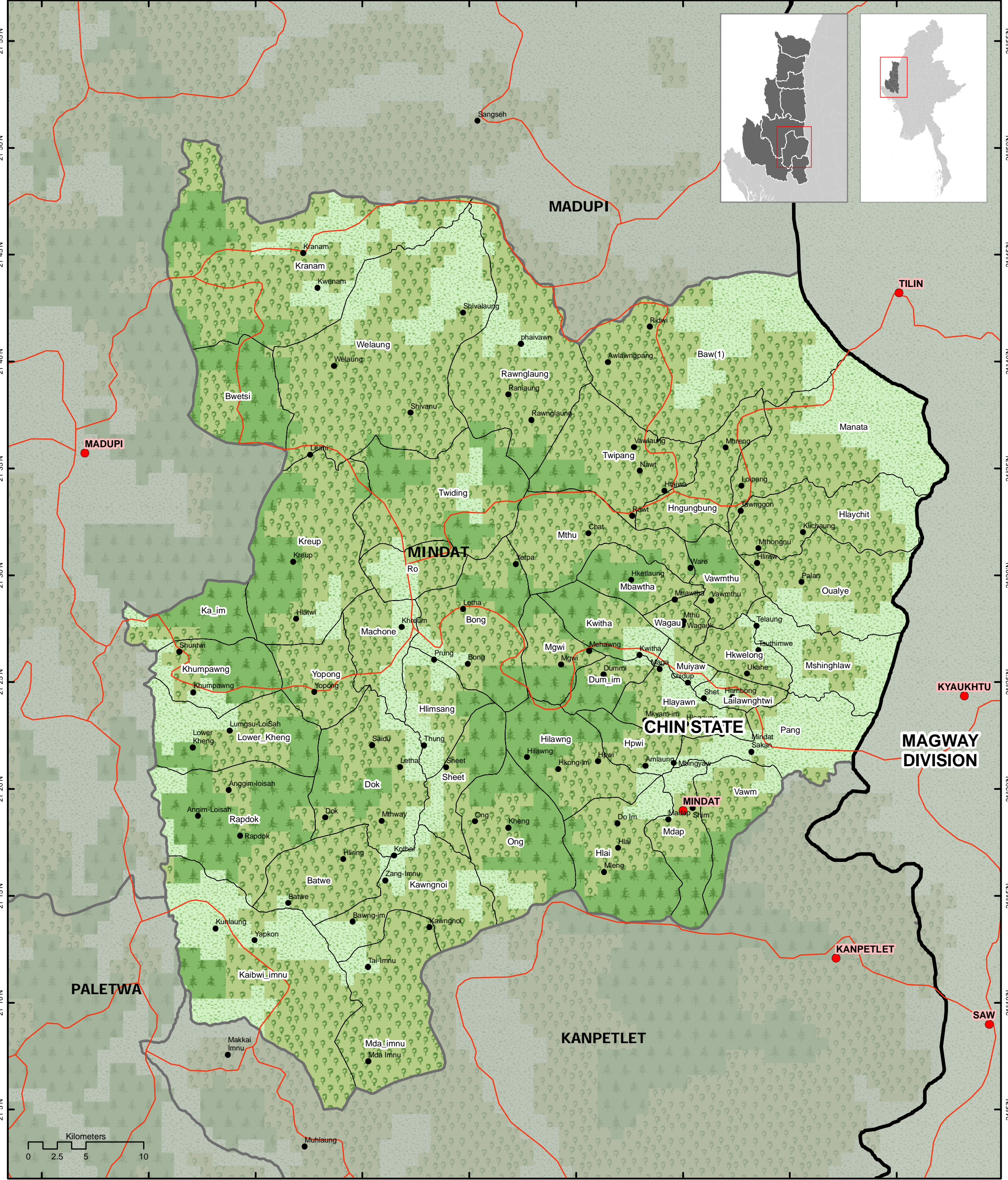


MINDAT TOWNSHIP

Chin State



93°25'E 93°30'E 93°35'E 93°40'E 93°45'E 93°50'E 93°55'E 94°0'E 94°5'E



Map ID: MIMU249v1_Mindat Township
Creation Date 06 August 2009, A3
Projection/Datum: Geographic/WGS84

Map produced by the MIMU - info.mimu@undp.org

● Villages	Land Cover	Deciduous Forest
● Towns	Agriculture	Dry Mixed Deciduous Forest
— Road	Scrubland	Moist Mixed Deciduous Forest
— Country Boundary	Forest	Mangrove
— State_Division Boundary	Evergreen Forest	No data
— Township Boundary		Urban
— Village Tract Boundary		

Data Sources :
BASE MAP - (MIMU);
Village Tract Boundary : SLRD
Boundaries - WFP modified by MIMU 2008;
Place names - Ministry of Home Affair (GAD)
translated by MIMU

